

Biochemistry Phase II

~260,000 gross square feet




\$116,000,000

Occupation late 2010/early 2011

LEGEND

 Building Support
 Circulation
 Existing

 Holding
 Holding Support
 Instructional

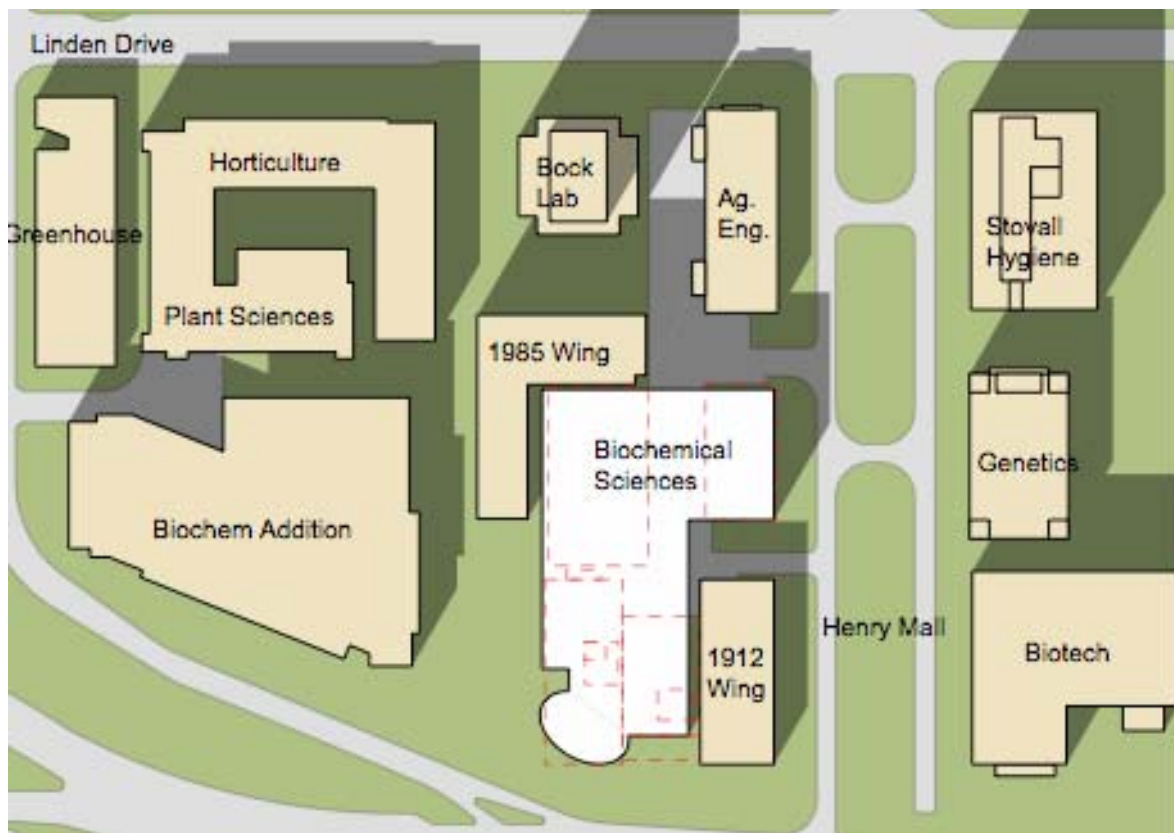
 Laboratory
 Laboratory Support
 Mechanical

 Office
 Procedure



2

Biostar report 1997



Agronomy from 1929



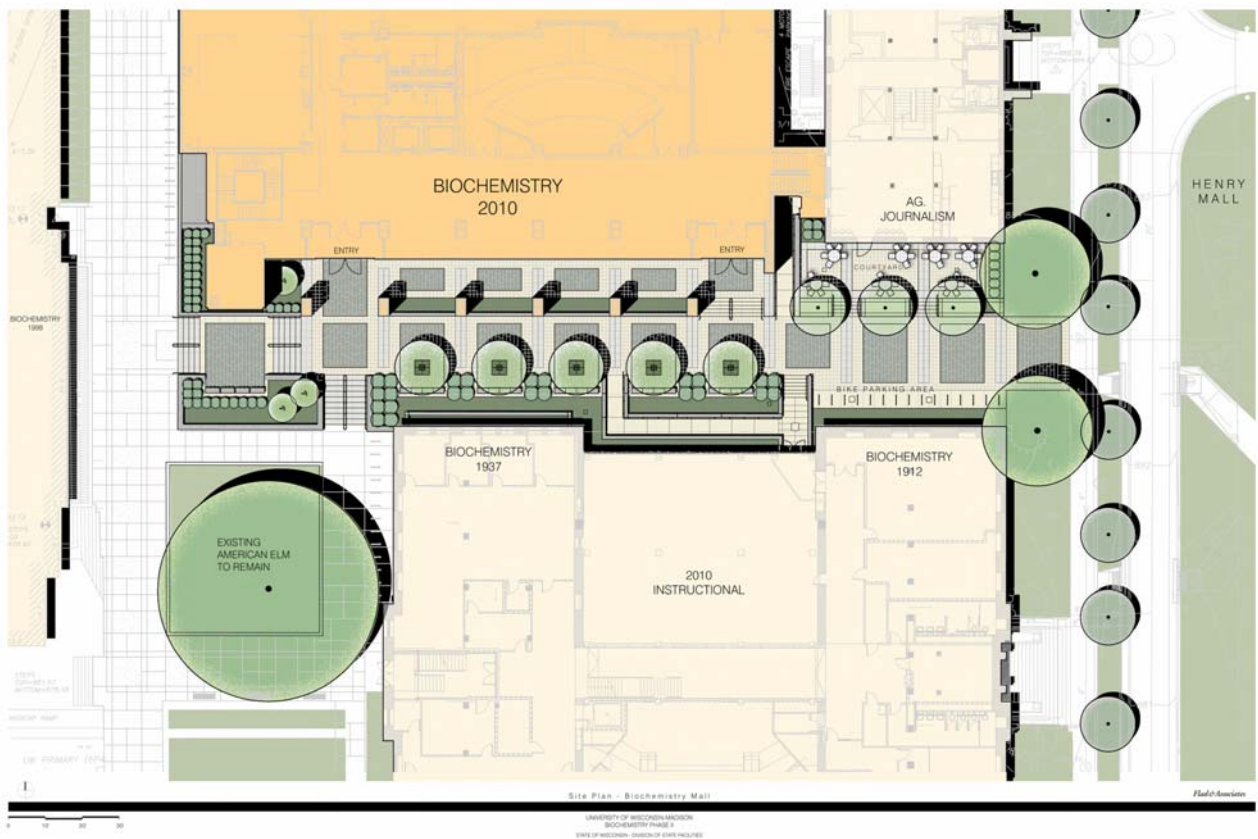
Biochemistry in 1918



1922



Site Plan

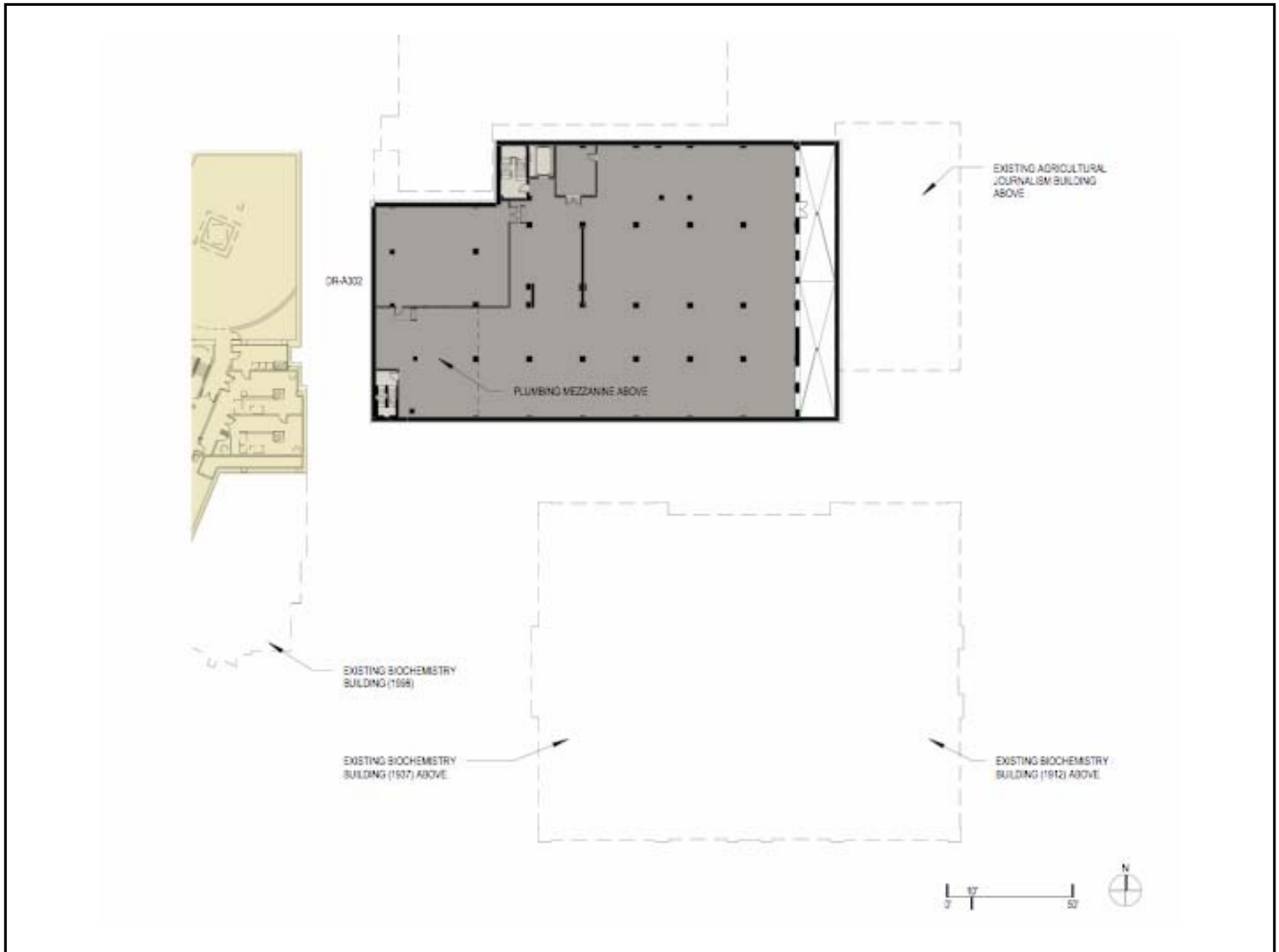


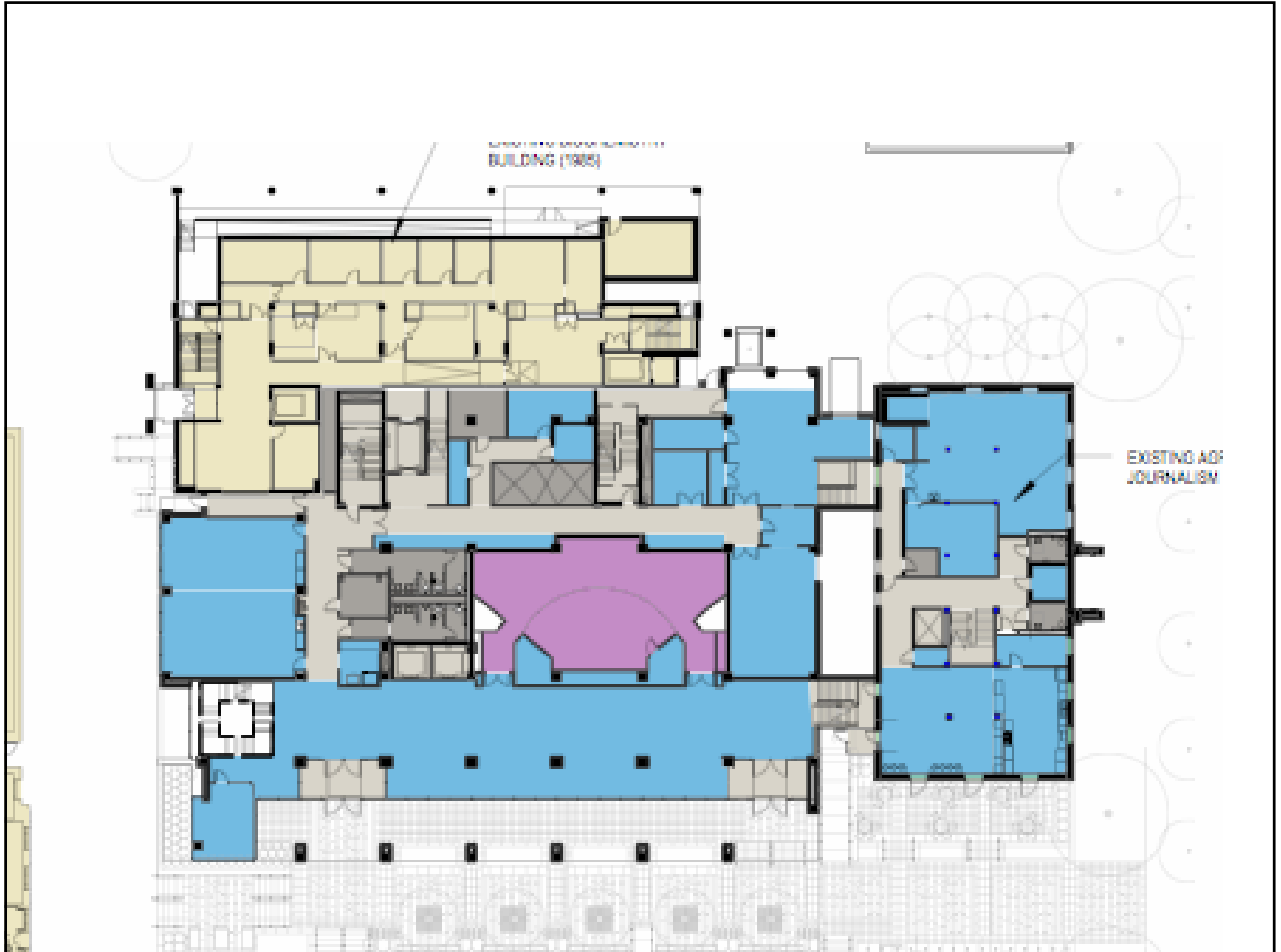
View from southwest



View from Henry Mall







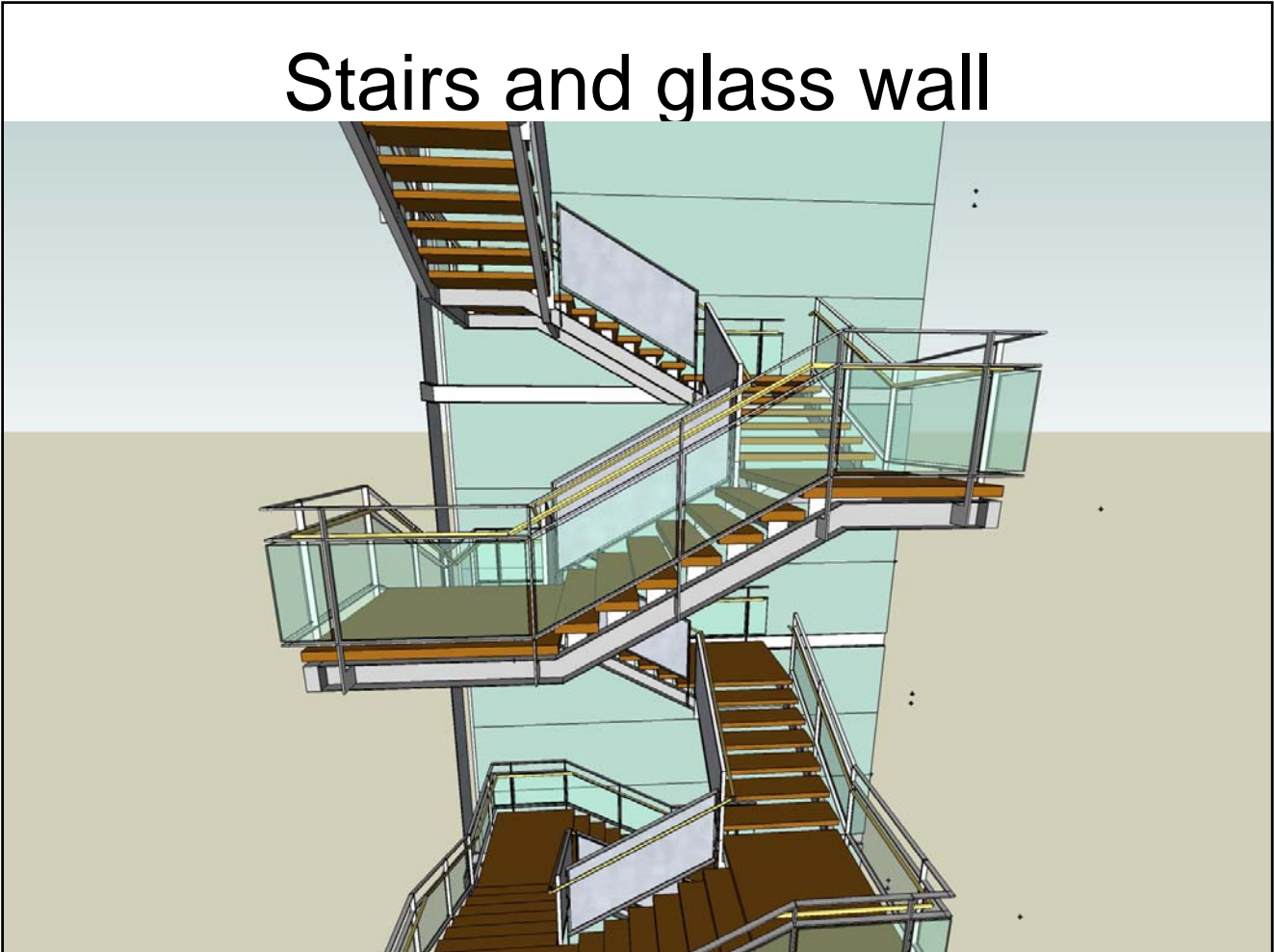
Lobby view looking east

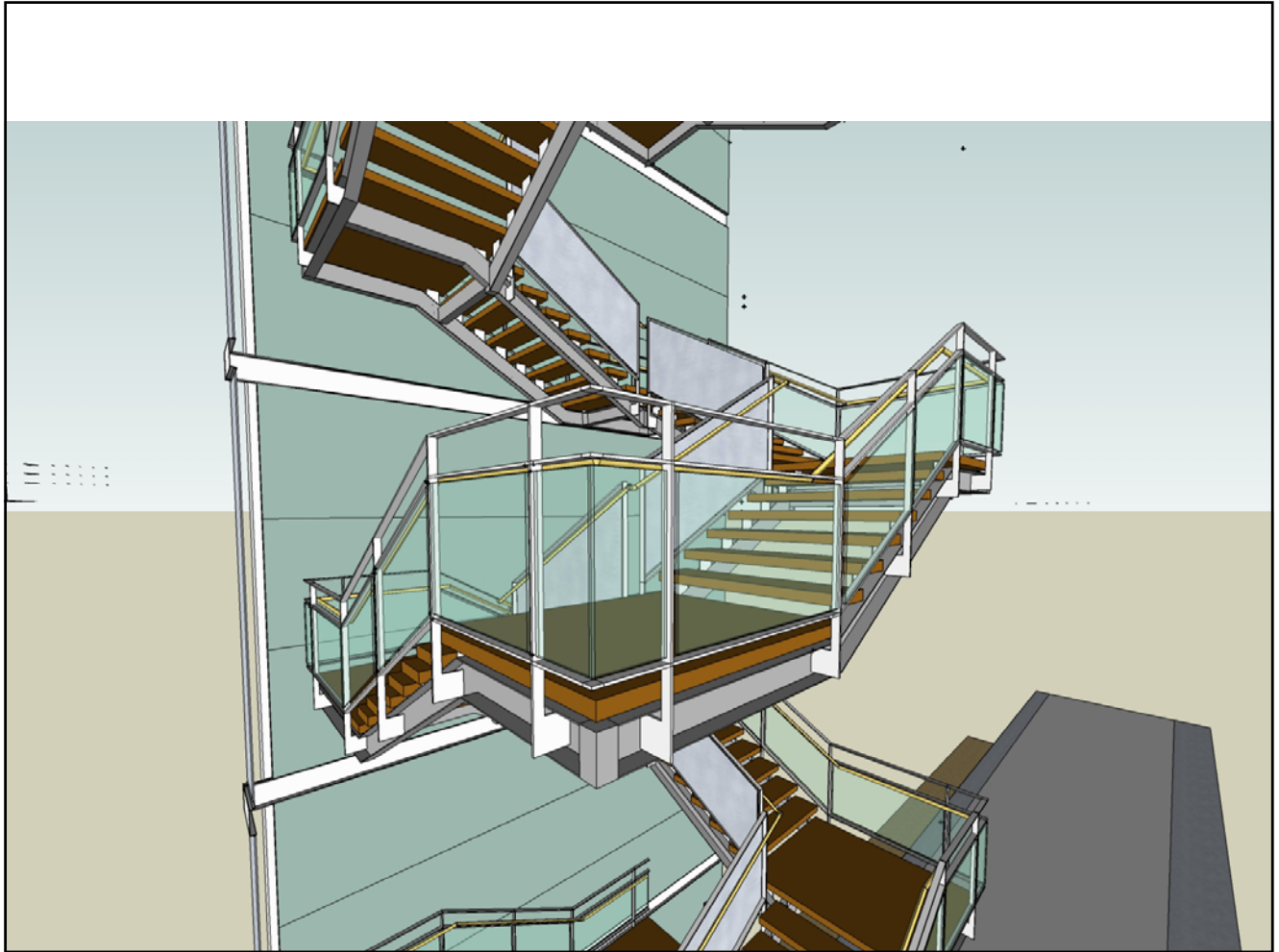


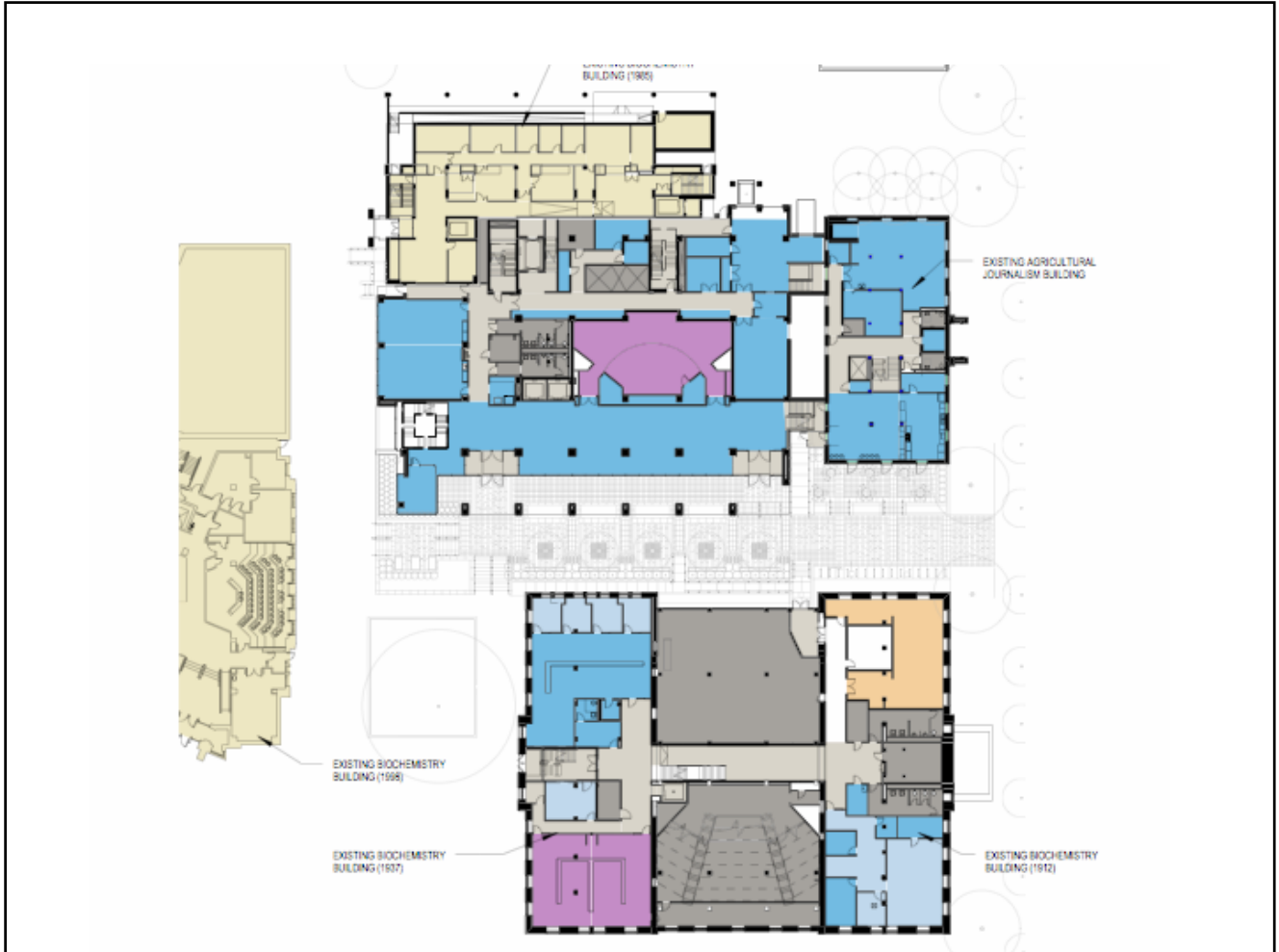
Lobby view looking west

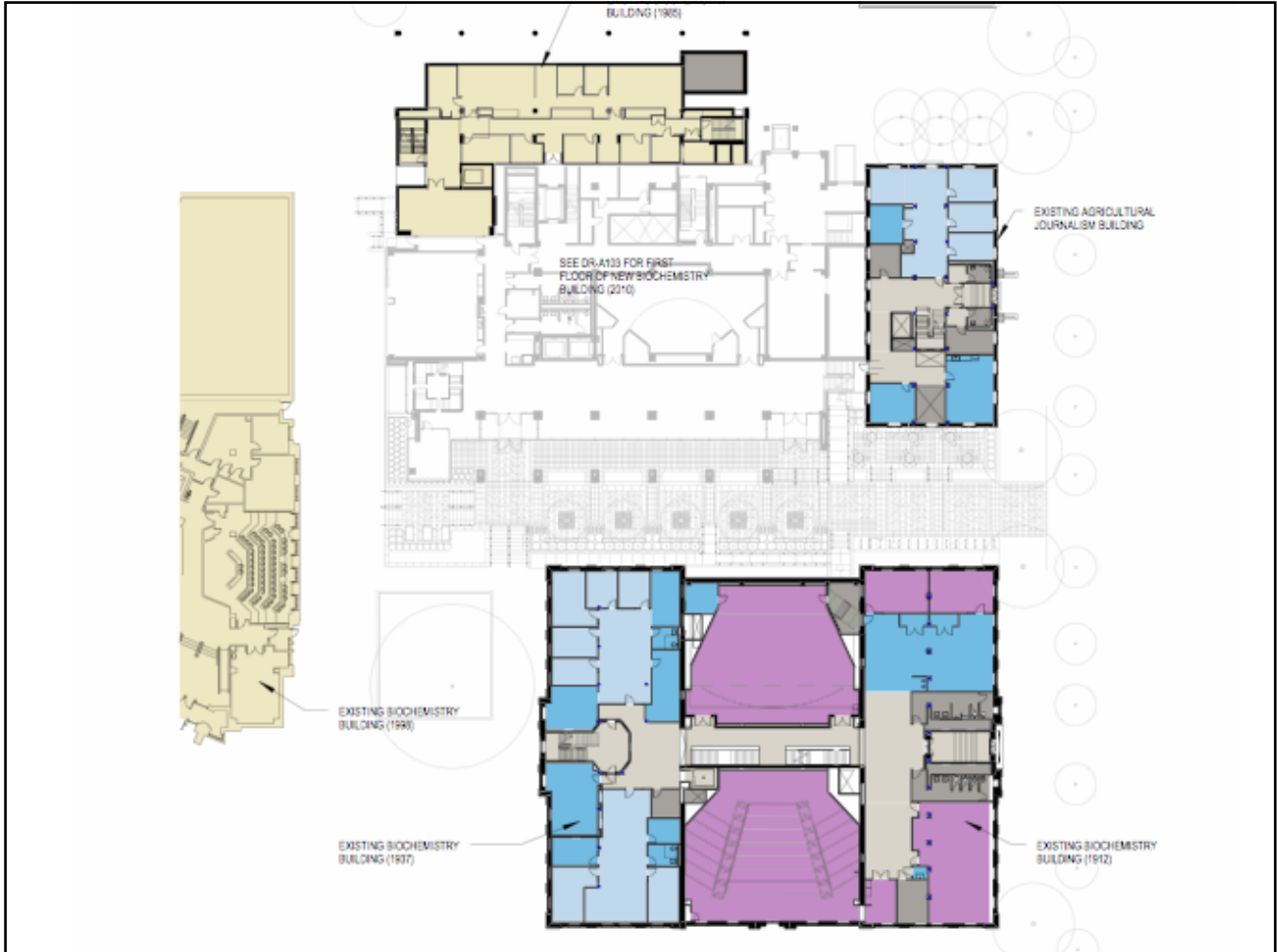


Stairs and glass wall

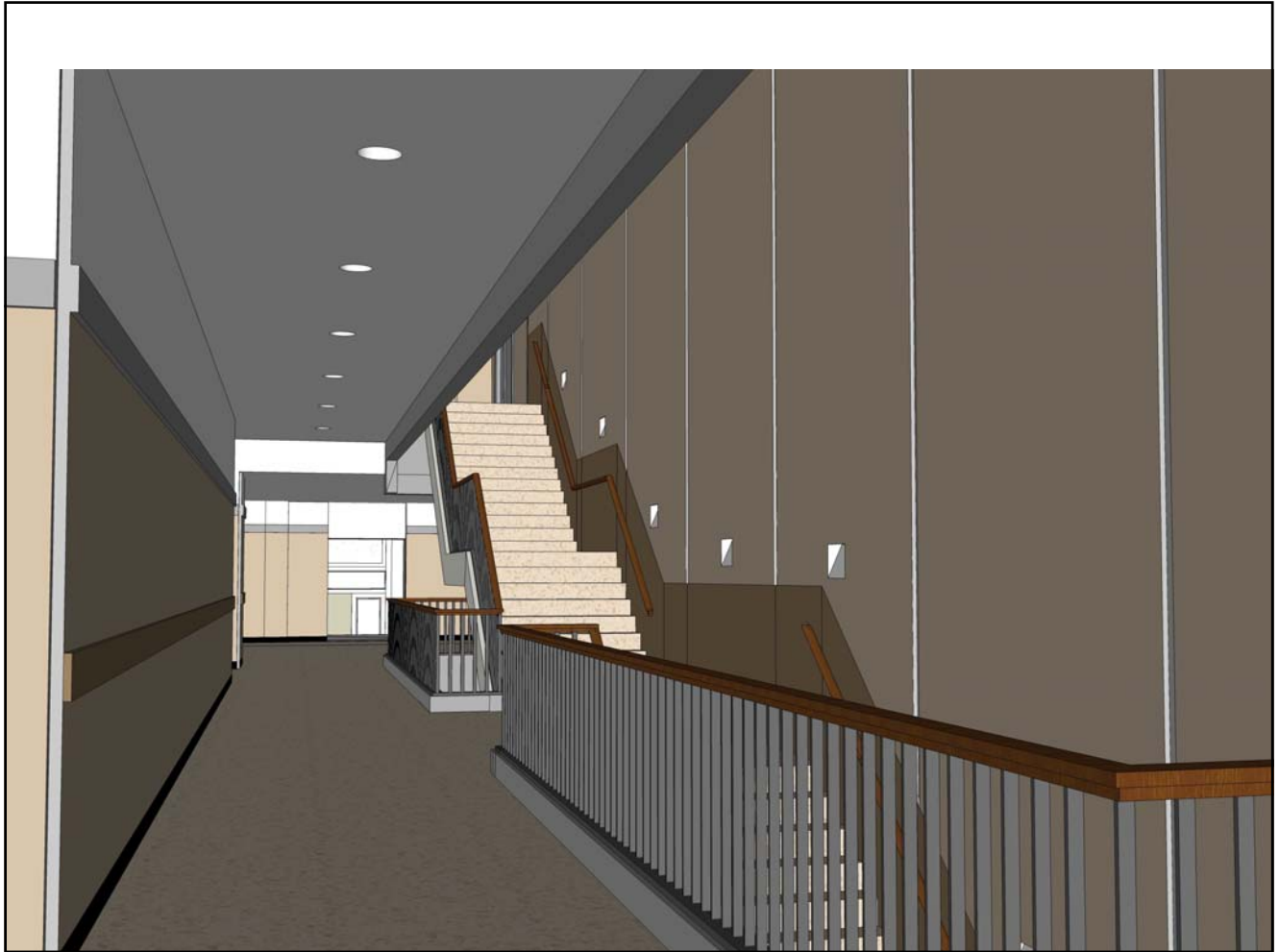




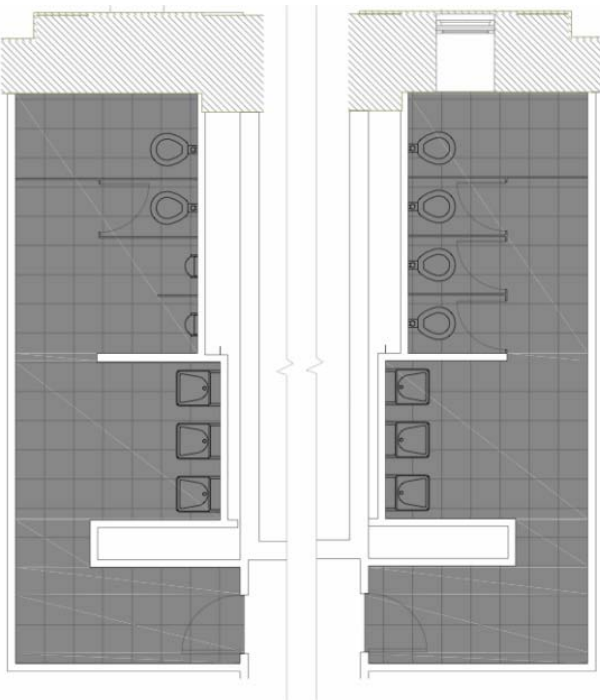




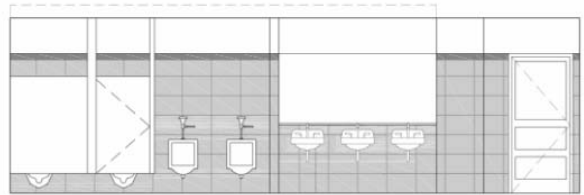




Toilets 12/37



18x18 Floor Tile



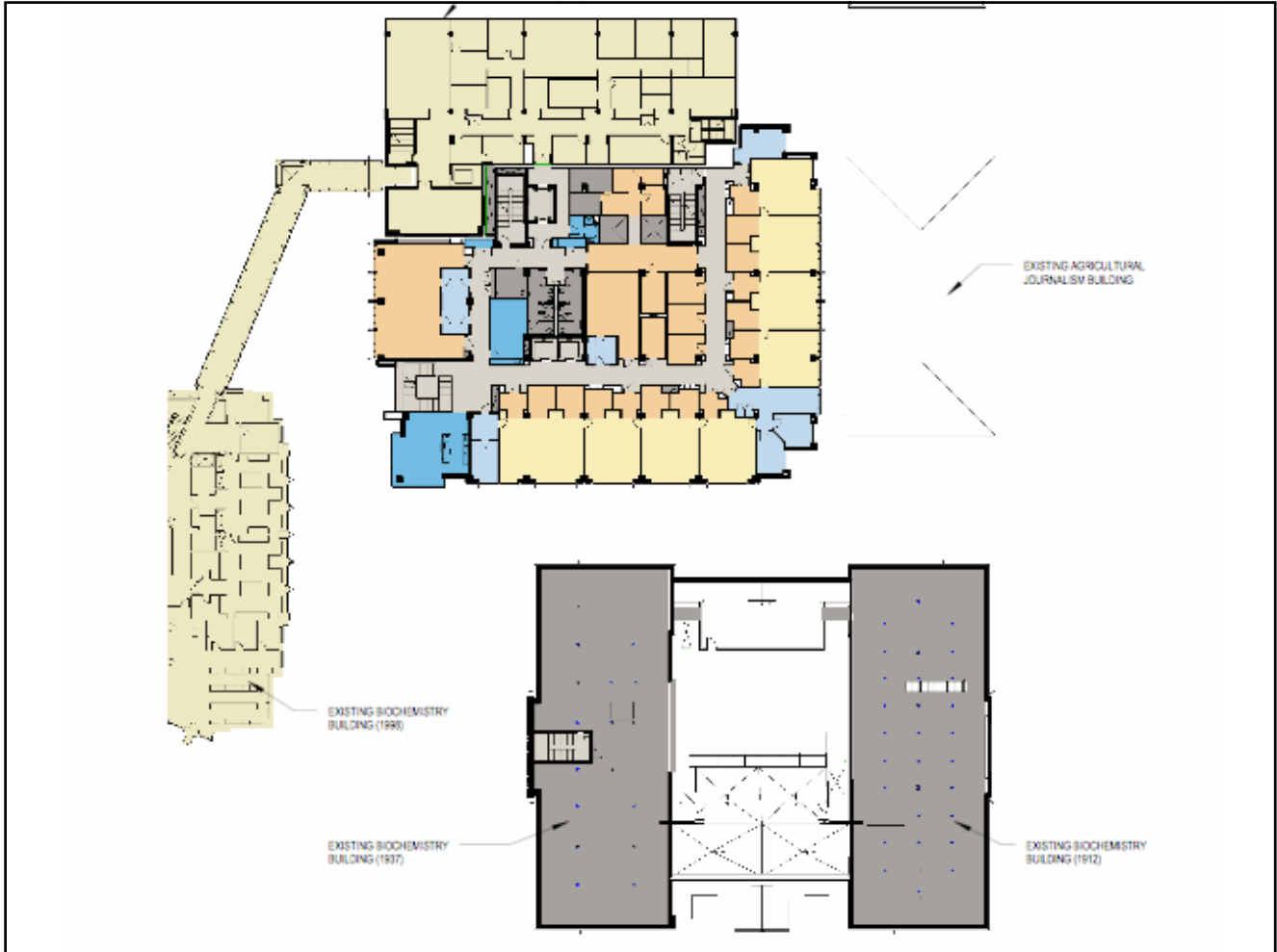
12x18 Wall Tile Field
4x18 Wall Tile Accent

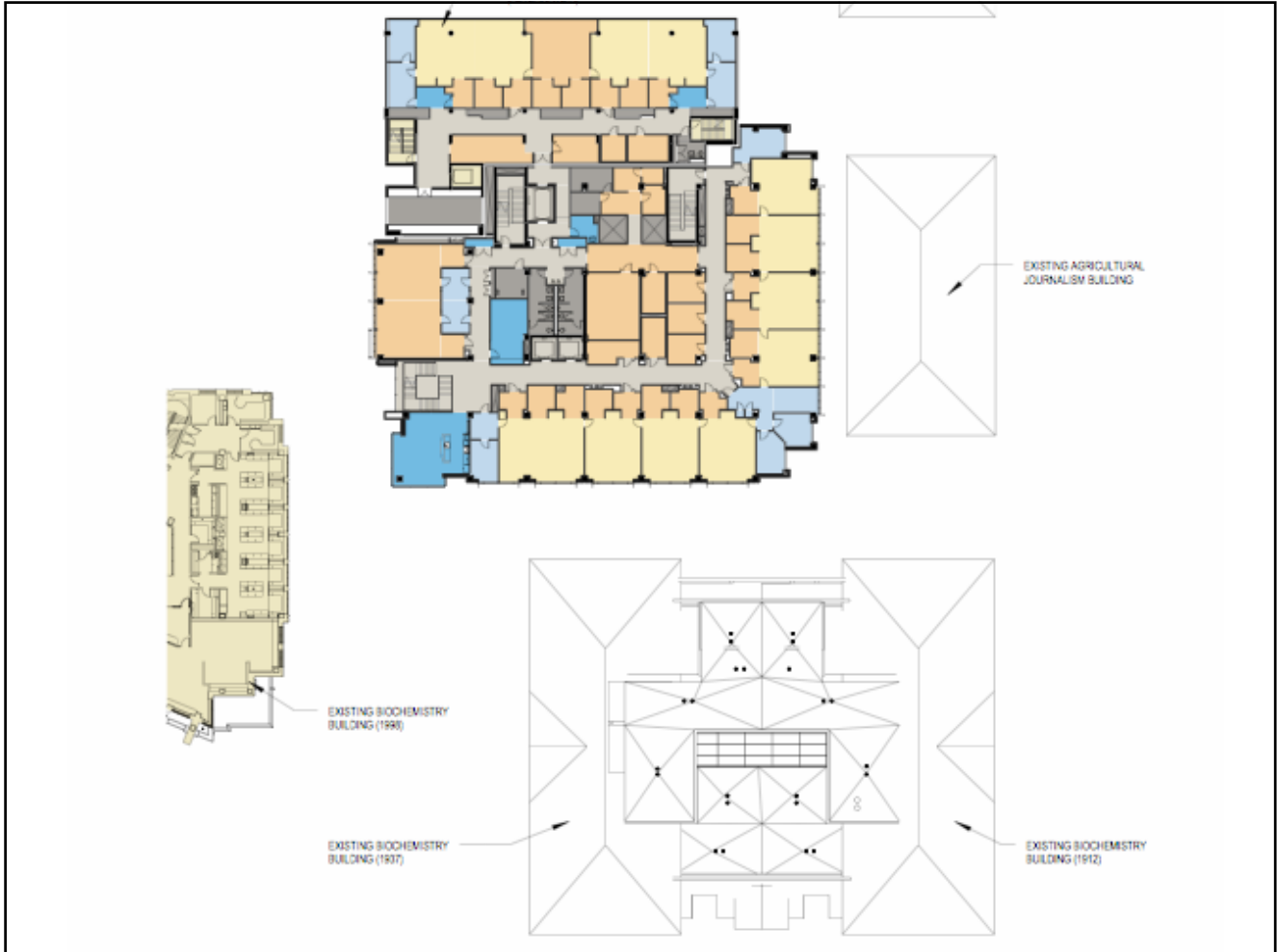
Toilet Room- 12/37

1/4" = 1'-0"









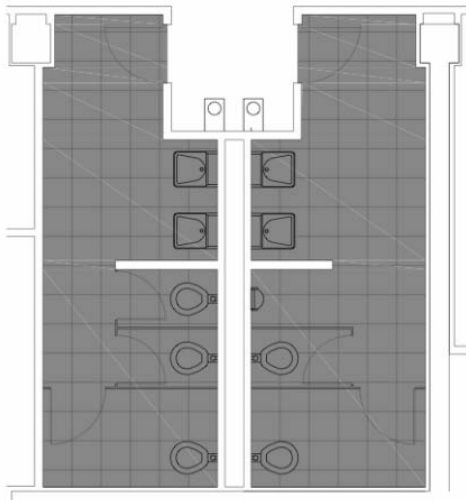
Typical lab



3/16" = 1'-0"

Lab Floor Pattern - 2010

Toilets 2010



18x18 Floor Tile



12x18 Wall Tile Field
2x18 Wall Tile Accent

Toilet Room- 2010

1/4" = 1'-0"

