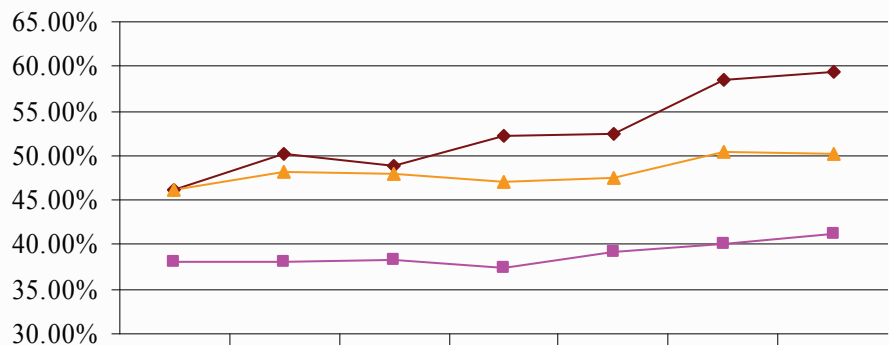


Comparison of 6-year New Freshmen Graduation Rates



New Freshman Cohort Starting	Fall 1992	Fall 1993	Fall 1994	Fall 1995	Fall 1996	Fall 1997	Fall 1998
—◆— University Of Wisconsin-La Crosse	46.10%	50.20%	48.80%	52.10%	52.50%	58.40%	59.50%
—▲— University of Wisconsin System - All Masters I Universities (9)	46.26%	48.27%	48.02%	46.99%	47.56%	50.52%	50.19%
—■— Public Masters I Universities (233)	38.02%	38.03%	38.25%	37.51%	39.30%	40.19%	41.25%

Data Definitions

- Completions within 150% of expected time, or 6-year graduation rate, is the metric most commonly used to compare student graduation outcomes
- All first-time, first degree seeking new freshman are included in the cohort; the graduation rate reflects the proportion of those students who graduate within 6-years from the time they start
- Data from The Education Trust College Results Online (<http://www.collegeresults.org>): Graduation Rate: Total, Public/Private Non-Profit Status=Public, Carnegie Classification=Masters I
- Comparison data is only available through 2003

Points of Interest

In Spring 2005, a group from the American Association of State Colleges and Universities (AASCU) visited UWL as part of a study of Universities demonstrating significant growth in 6-year graduation rates in an effort to identify factors contributing to improved student outcomes

Office of Institutional Research

Office of the Provost/Vice Chancellor of Academic Affairs, 145 Graff Main Hall, University of Wisconsin—La Crosse
1725 State Street, La Crosse, WI • Phone: (608) 785-8006, Fax: (608) 785-8046